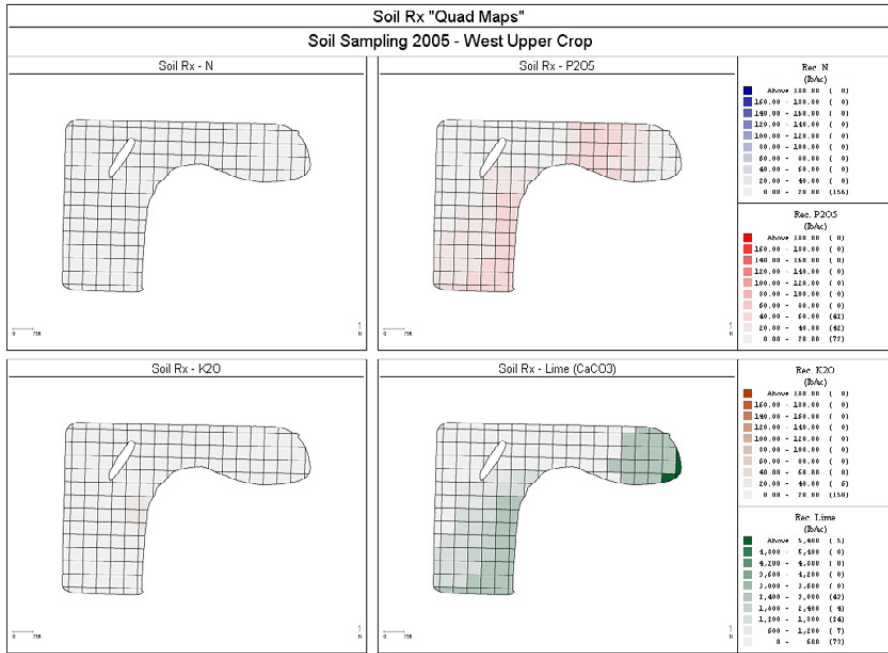
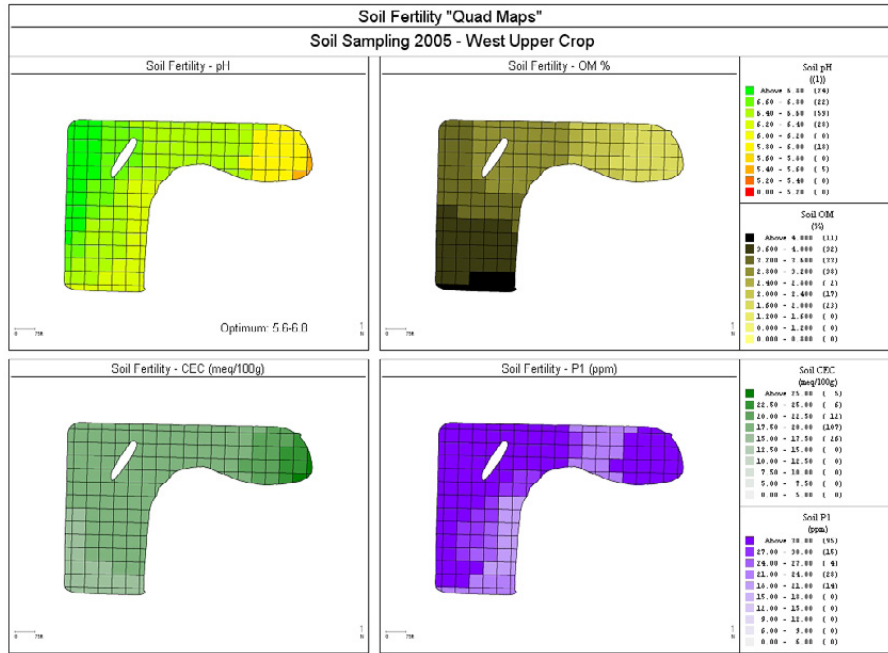
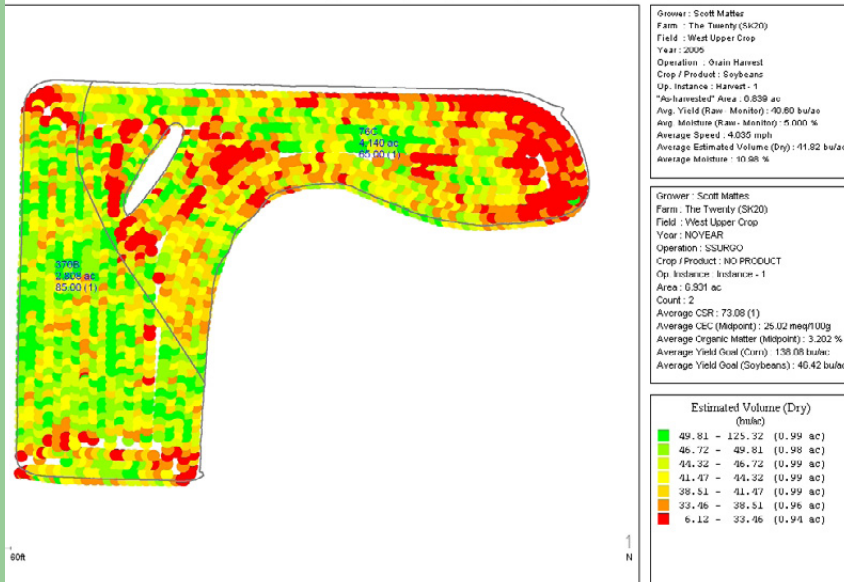


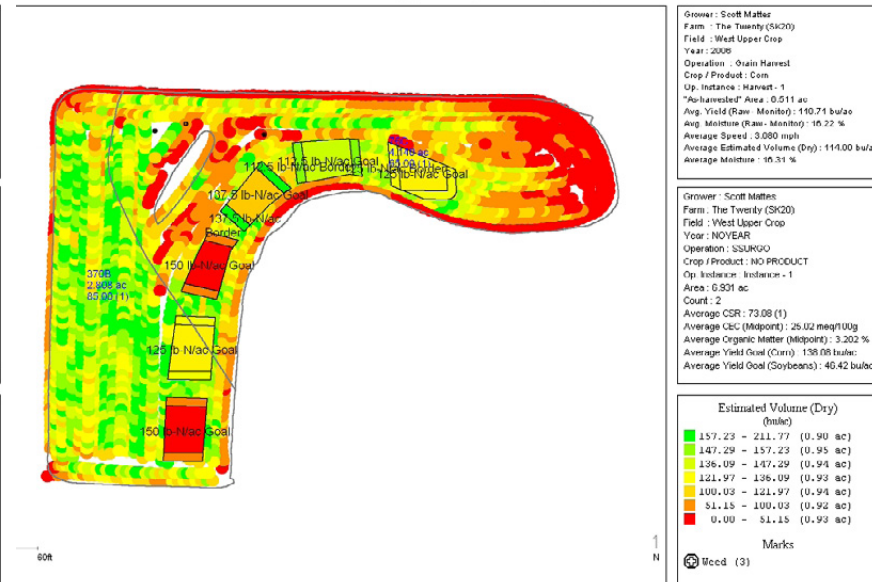
ISNT Soil Test Trials

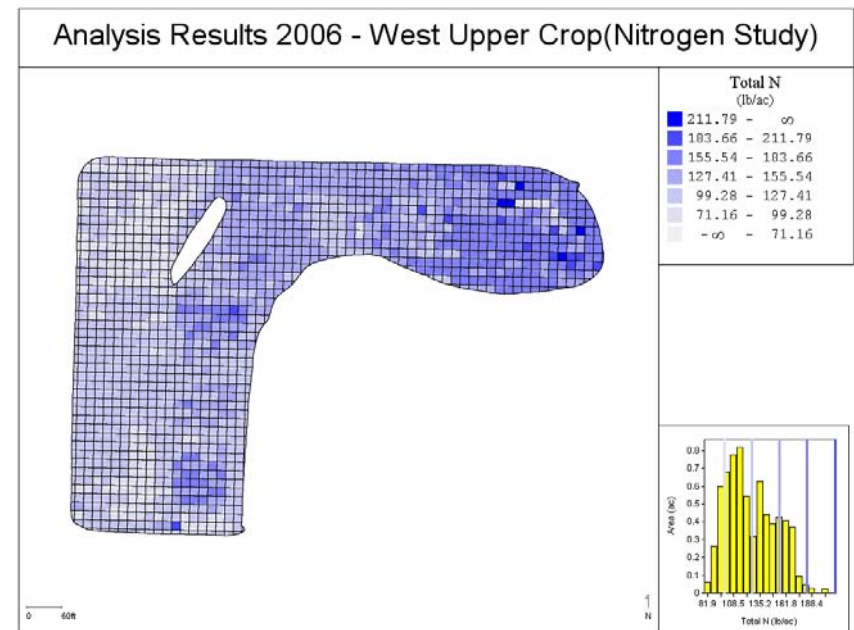
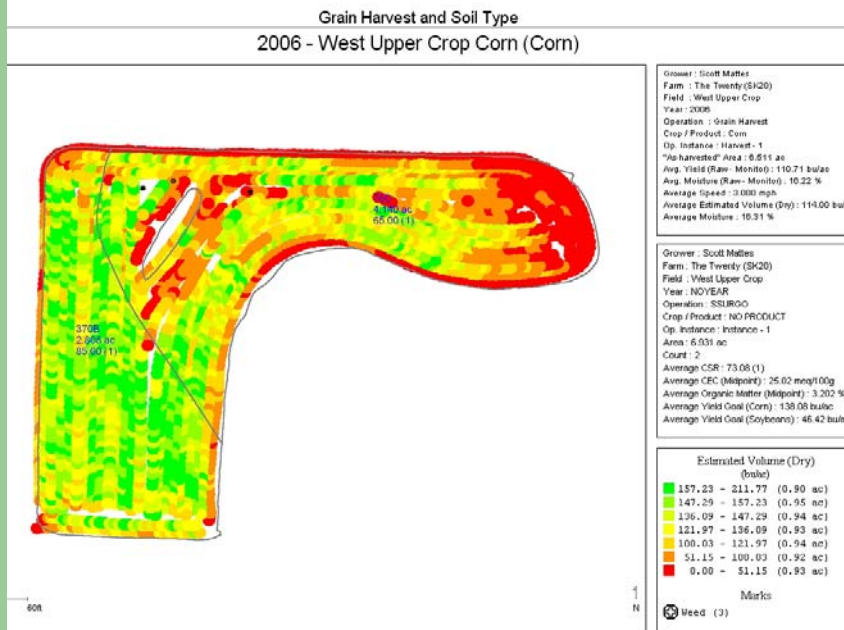
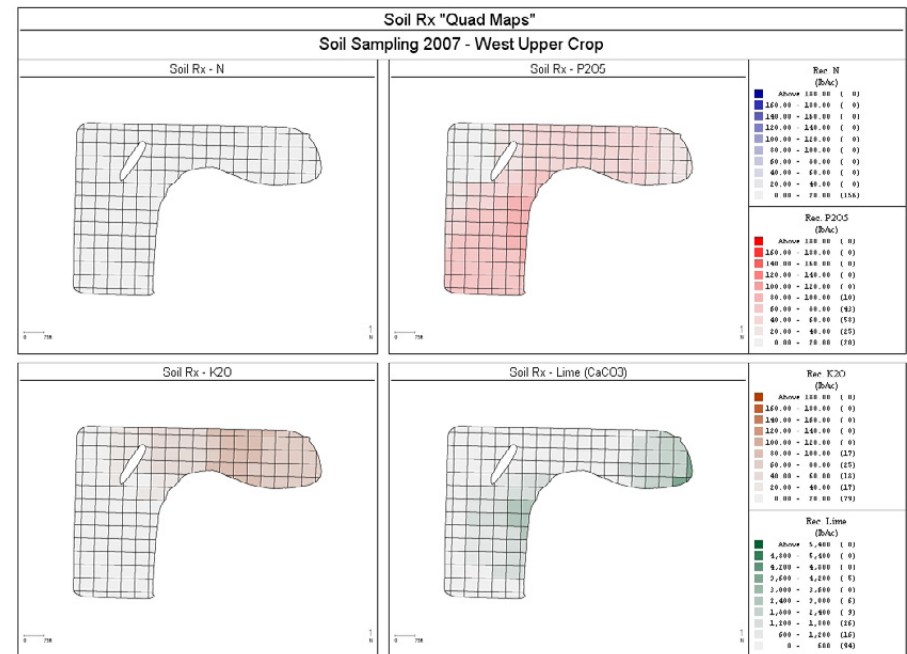
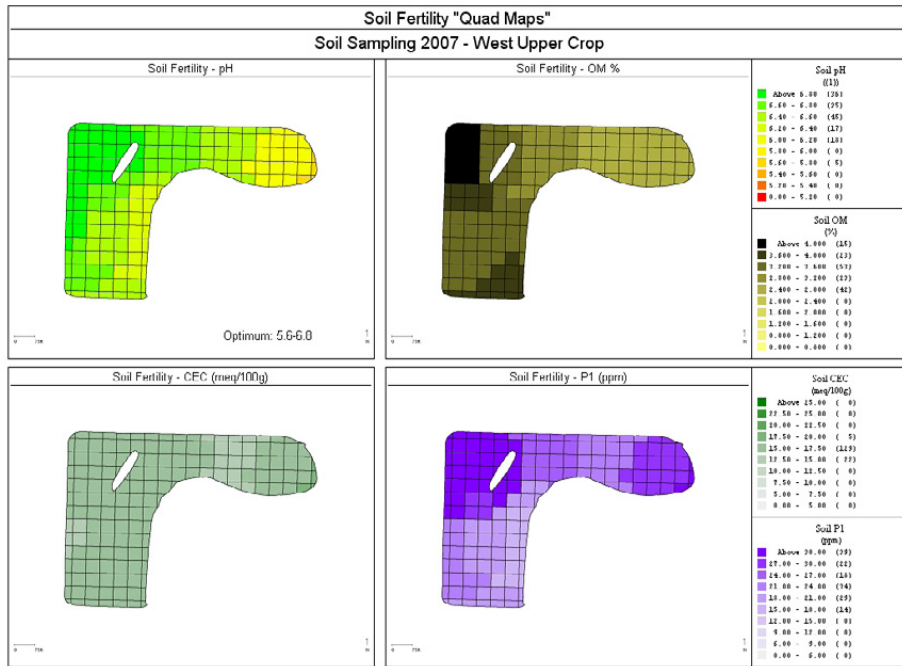


Grain Harvest and Soil Type
2005 - West Upper Crop Soybeans (Soybeans)



Grain Harvest and Soil Type
2006 - West Upper Crop Corn (Corn)





Summary - ISNT Soil Testing

- Slight yield increase
- Collect sample and develop Rx
- Save about 8% on N (use VRT!)

Yield Summary

N-Goal	Avg Test Yield	Avg ISNT Yield	Avg N Applied (Whole)	Avg N Applied (ISNT)	ISNT Yield %Diff	ISNT N-lbs %Diff	CSR
150 lb/a	152.98	146.66	152.26	128.97	-4.1%	-15.3%	85
150 lb/a	138.2	139.79	151.86	128.2	1.2%	-15.6%	65
137.5 lb/a	121.54	126.38	145.2	138.64	4.0%	-4.5%	65
125 lb/a	151.23	151.06	128.94	117.6	-0.1%	-8.8%	85
112.5 lb/a	124.44	125.38	119.85	125.32	0.8%	4.6%	65
Average =					0.3%	-7.9%	